

[Click to go to the page](#)

# *Nederman*



**Cyclone**

# The Cyclone (1,000-8,000 CFM)

*Suitable for collection of virtually any type of dust*



## **Applications:**

*Heavy Moulding • Grinding • Planing • Cabinet Shops • Dust Transfer Systems • Material Separation*

## **Features**

- *Cost effective*
- *Indoor or outdoor placement*
- *Excellent for high volumes of waste*
- *Barrel or air lock discharge*
- *Available with after filters*
- *Positive or negative configurations*
- *High efficiency design*

# How It Works

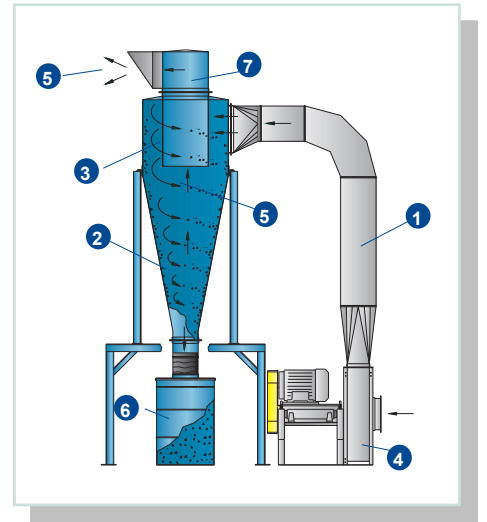
## A Positive Pressure Configuration

1. During normal operation, the dust travels down the supply duct, ④ into the material handling fan. From there, it is blown up into the cyclone.

2. Upon entering the cyclone, the air and material are diverted into a spiral motion around the inside perimeter. ② The centrifugal force applied by the side wall allows the heavier material to fall out of the air stream and into the collection bin (or through a rotary air lock). ⑥

3. The air and some of the finer dust ⑤ is then exhausted out of the cyclone via an inner cone. An outlet "volute" ③ is a weather cowl that ⑦ also acts as a transition for those applications which require a secondary filter.

4. The air and some fine dust exits the "volute" where it may be exhausted to atmosphere ⑤ or into a secondary filter.



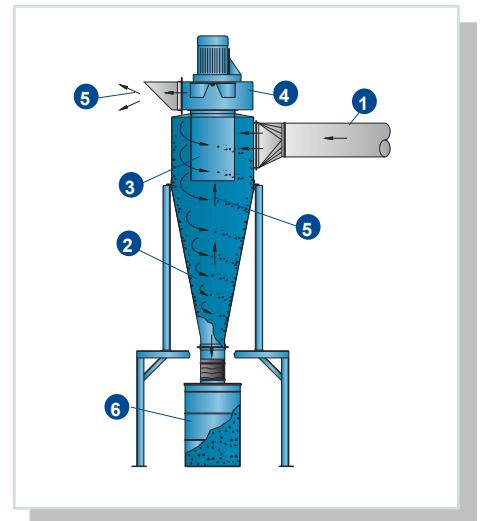
## A Negative Pressure Configuration

1. During normal operation, the dust is drawn down the supply duct ① and into the cyclone.

2. Upon entering the cyclone, the air and material are diverted into a spiral motion around the inside perimeter. ② The centrifugal force applied by the side wall allows the heavier material to fall out of the air stream and into the collection bin ⑥. (Or through a rotary air lock).

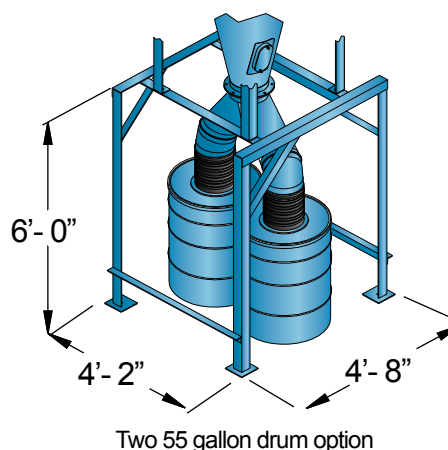
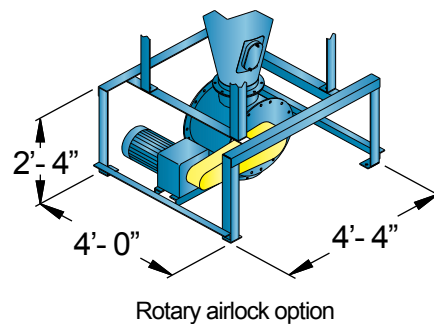
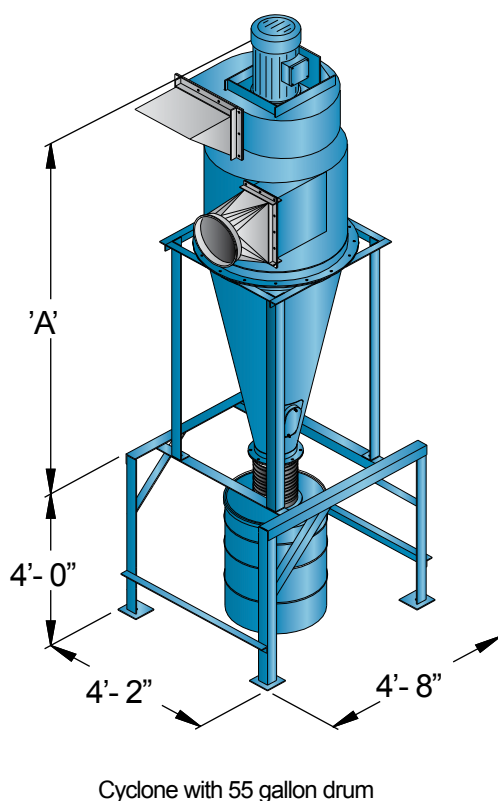
3. The air and some of the finer dust ⑤ is then exhausted out of the cyclone via an inner cone. ③

4. The air and some fine dust then passes through the main fan ④ where it may be exhausted to atmosphere ⑤ or into a secondary filter.



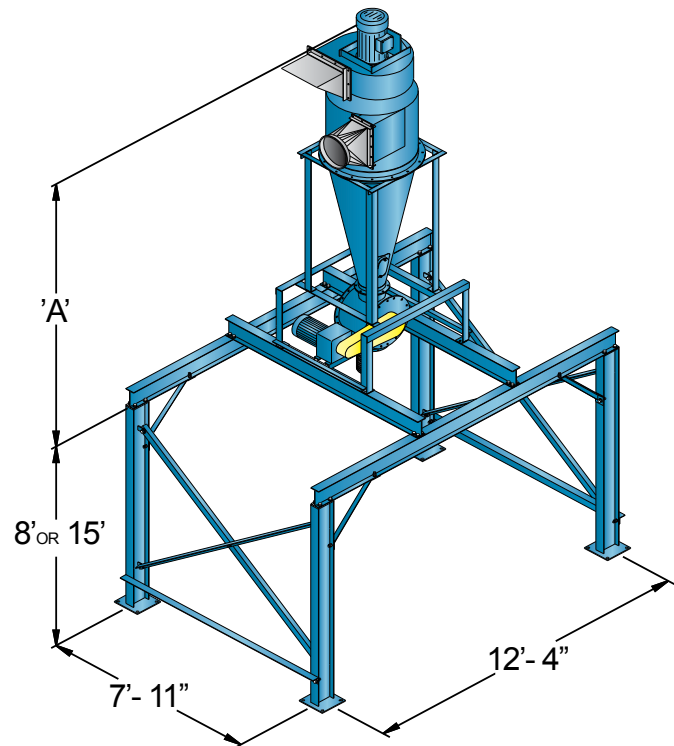
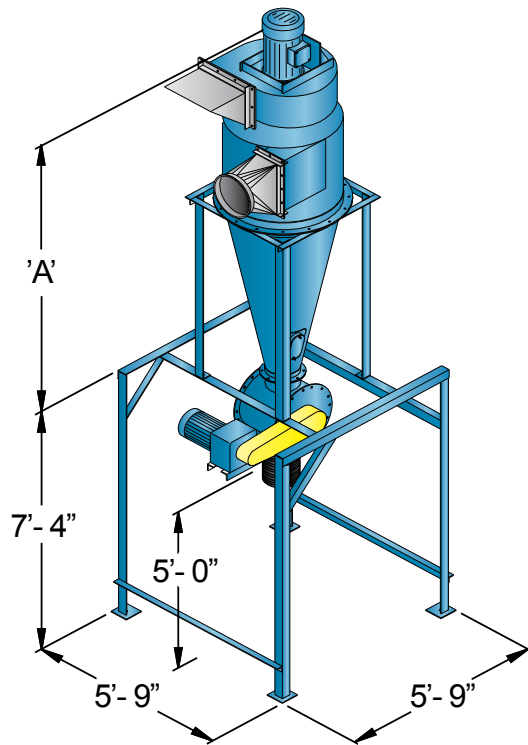
**NOTE:** Please consult with your Nederman representative for compressed air requirements

# Unit Specifications



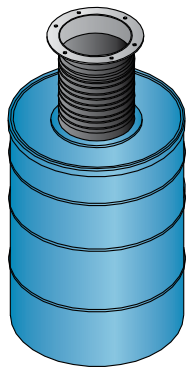
MODEL NUMBER	CYCLONE DIAMETER	AIR VOLUME (CFM)	FAN MOTOR (HP)	STATIC PRESSURE (EXT. WG)	'A'	INLET DIAMETER	WEIGHT FILTER&FAN (LBS.)
C - 2005	24"	2,000	5	5 "	6' - 11"	9"	1,050
C- 2012	24"		15	8 "	7' - 3"		1,100
C-4015	34"	4,000	15	6 "	10' - 7"	14"	1,300
C-4020	34"		20	9 "	10' - 10"		1,500
C-6020	40"	6,000	20	7 "	12' - 2"	16"	1,650
C-6030	40"		30	12 "	12' - 7"		1,900
C-8030	48"	8,000	30	8 "	14' - 11"	18"	2,100
C-8040	48"		40	12 "	15' - 3"		2,200

# Unit Specifications

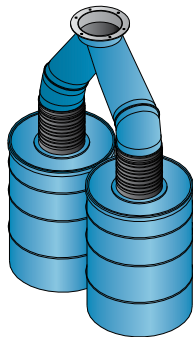


MODEL NUMBER	CYCLONE DIAMETER	AIR VOLUME (CFM)	FAN MOTOR (HP)	STATIC PRESSURE (EXT. WG)	'A'	INLET DIAMETER	WEIGHT FILTER&FAN (LBS.)
C - 2005	24"	2,000	5	5 "	10' - 7"	9"	1,050
C- 2012	24"		15	8 "	10' - 11"		1,100
C-4015	34"	4,000	15	6 "	14' - 3"	14"	1,300
C-4020	34"		20	9 "	14' - 6"		1,500
C-6020	40"	6,000	20	7 "	15' - 10"	16"	1,650
C-6030	40"		30	12 "	16' - 3"		1,900
C-8030	48"	8,000	30	8 "	18' - 7"	18"	2,100
C-8040	48"		40	12 "	18' - 11"		2,200

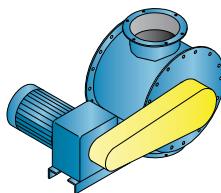
# Options



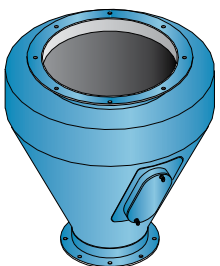
55 Gallon Drum Assembly



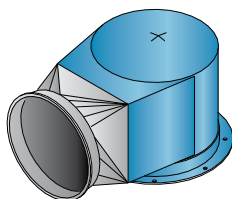
Two 55 Gallon Drum Assembly



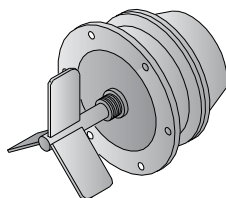
Rotary Airlock



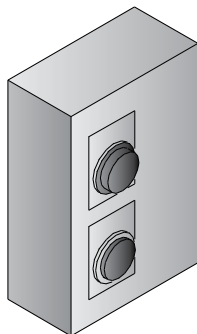
Cyclone Expansion Chamber



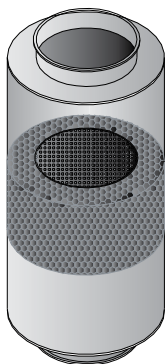
Cyclone Air Outlet Volute



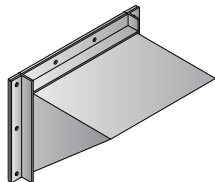
“Bindicator” Level Sensor



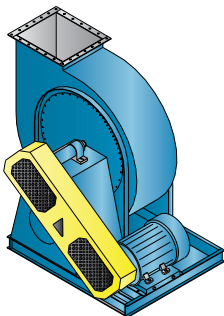
Control Panel



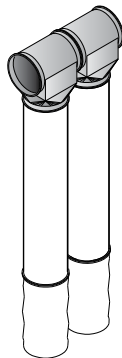
Silencer



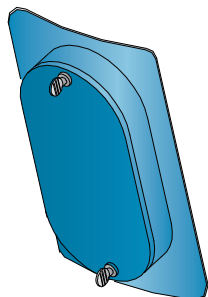
Fan Outlet Weather Cowl



Ground Mounted Fan



Plenum After Filters



Clean-Out Door



# Installations

**Plenum after-filter**



**Cyclone with NFP after-filter**



**Trailer Loading Structure**



**Dumpster Loading**



**Cyclone with plenum after filter**



**Rotary airlock & Bindicator**



**Expansion Chamber**



**Barrell Loading Structure**



# Bringing superior conditions to the workplace and the environment

For more than 60 years Nederman has developed, manufactured and marketed products and system solutions to reduce the strain on the environment and improve working conditions in numerous industries.

Our products and systems have been ground-breaking in industries such as Machining, Metal Fabrication, Automotive, Composite Manufacturing, Food, Paper, Chemical, Pharmaceutical and many others.

Today companies all over the world are using equipment from Nederman.



**Nederman LLC**  
102 Transit Ave  
Thomasville NC, 27360  
800-533-5286

REGISTERED  
**ISO**  
9001:2008  
14001:2004

# **Nederman**

[www.nederman.com](http://www.nederman.com)

Nederman Sales companies in: Australia, Austria, Belgium, Brazil, Canada, China, Czech Rep., Denmark, France, Germany, Hungary, India, Ireland, Northern Ireland, Norway, Poland, Portugal, Romania, Russia, Slovakia, Spain, Sweden, Thailand, United Kingdom, USA  
Nederman Agents in: Bulgaria, Cyprus, Egypt, Estonia, Finland, Greece, Holland, Hong Kong, Iceland, Iran, Ireland, Italy, Japan, Korea, Latvia, Lithuania, Malaysia, New Zealand, Philippines, Saudi Arabia, Serbia, Singapore, Slovenia, South Africa, Switzerland, Taiwan, R.O.C, Thailand, Turkey, United Arab Emirates